

# Leveraging university resources to integrate climate adaptation and hazard mitigation in the Eno-Haw Region

September 12, 2016

Sierra C Woodruff  
[sscheleg@email.unc.edu](mailto:sscheleg@email.unc.edu)

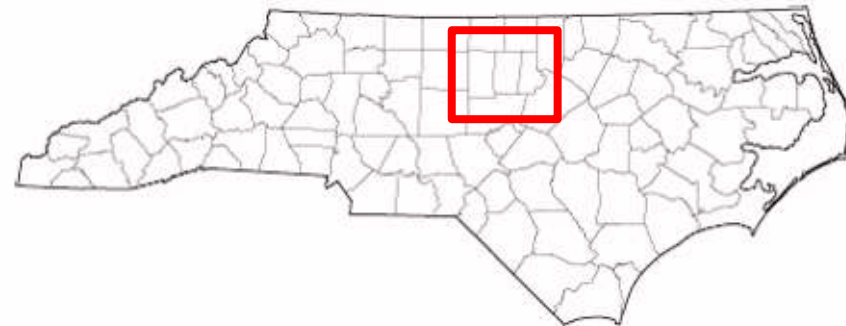
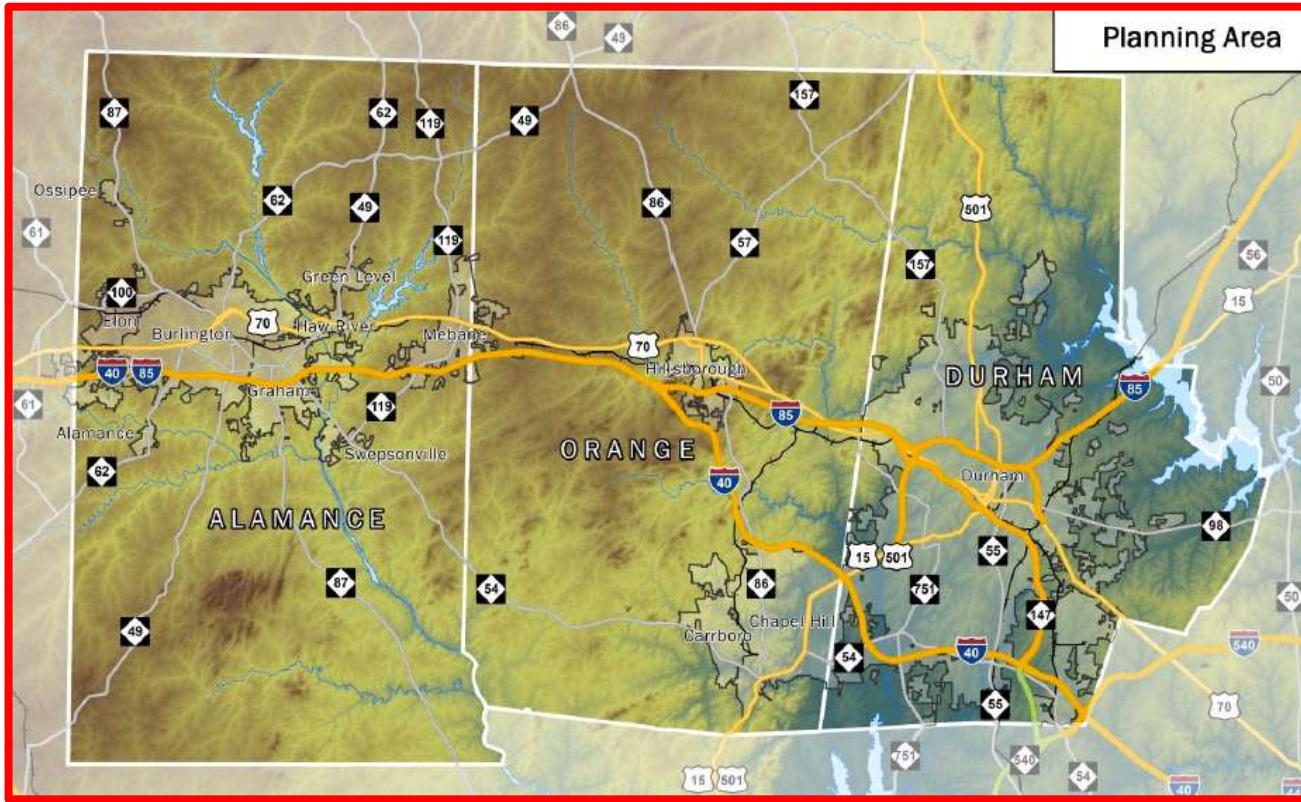
# Outline

- Eno-Haw regional hazard mitigation plan
- Adaptation and hazard mitigation
- Capstone course
- Benefits and limitations



# Evo-Plan

Regional Hazard Mitigation Plan



# Barriers to Adaptation



Money



Time



Technical Capacity



Natural Hazard Considered	Was this hazard considered significant/appropriate enough to be addressed in the plan at this time?	How was this determination made?	Why was this determination made?
<b>OTHER HAZARDS</b>			
Climate Change	Yes	By consensus of the Eno-Haw HMPT.	The HMPT feels that it is necessary to address changes in the climate and the effects those changes may have on identified natural hazards.

# Adaptation and Hazard Mitigation

## Opportunities

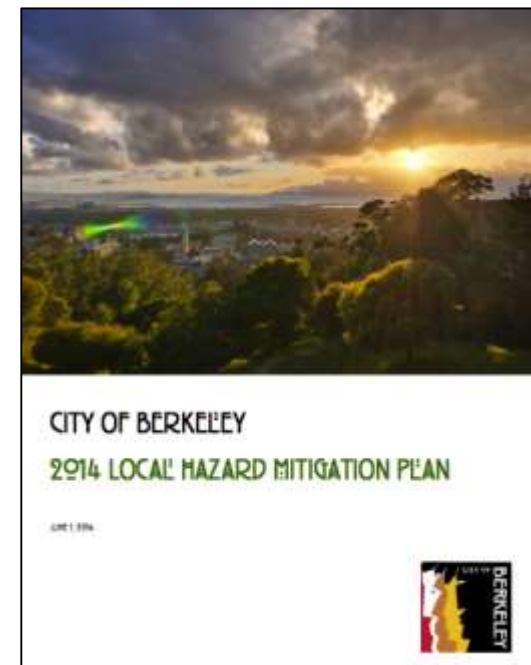
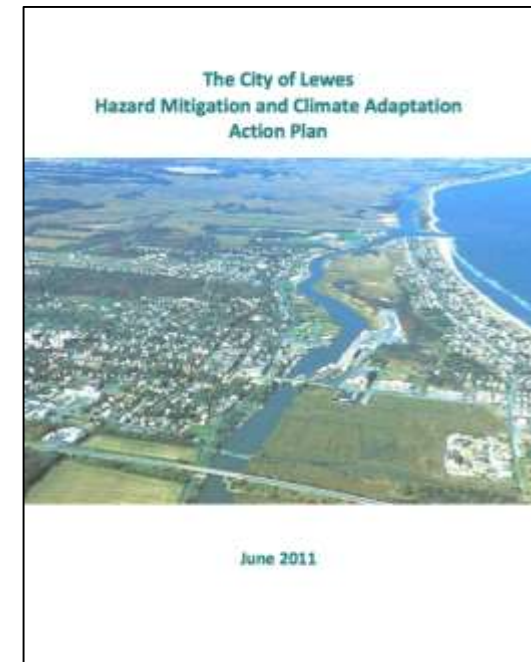
- Better understanding of risk in the future
- Adaptation strategies complements mitigation
- Better protect citizens
- Make longer-lasting investments

## Challenges

- Timing of action

# Adaptation and Hazard Mitigation

- States required to address climate change
- Local governments encouraged in 2013 “Local Mitigation Planning Handbook”



# Capstone Course

- 11 UNC-CH Seniors
- 1 Semester
- Review literature on how climate change will affect hazards
- Analyze existing plans
- Propose potential mitigation/adaptation strategies



# Climate Change Affect on Hazards

	Hazard	Frequency	Magnitude
High	Flooding	↑	↑
	Winter Weather	↑	↑
Risk	Hurricane/Tropical Storms		↑
	Drought/Extreme Heat	↑	↑
	Thunderstorms/Lightning/Hail		
	Dam/Levee Failure		
	Tornadoes		
Low	Wildfires	↑	↑
	Landslides		

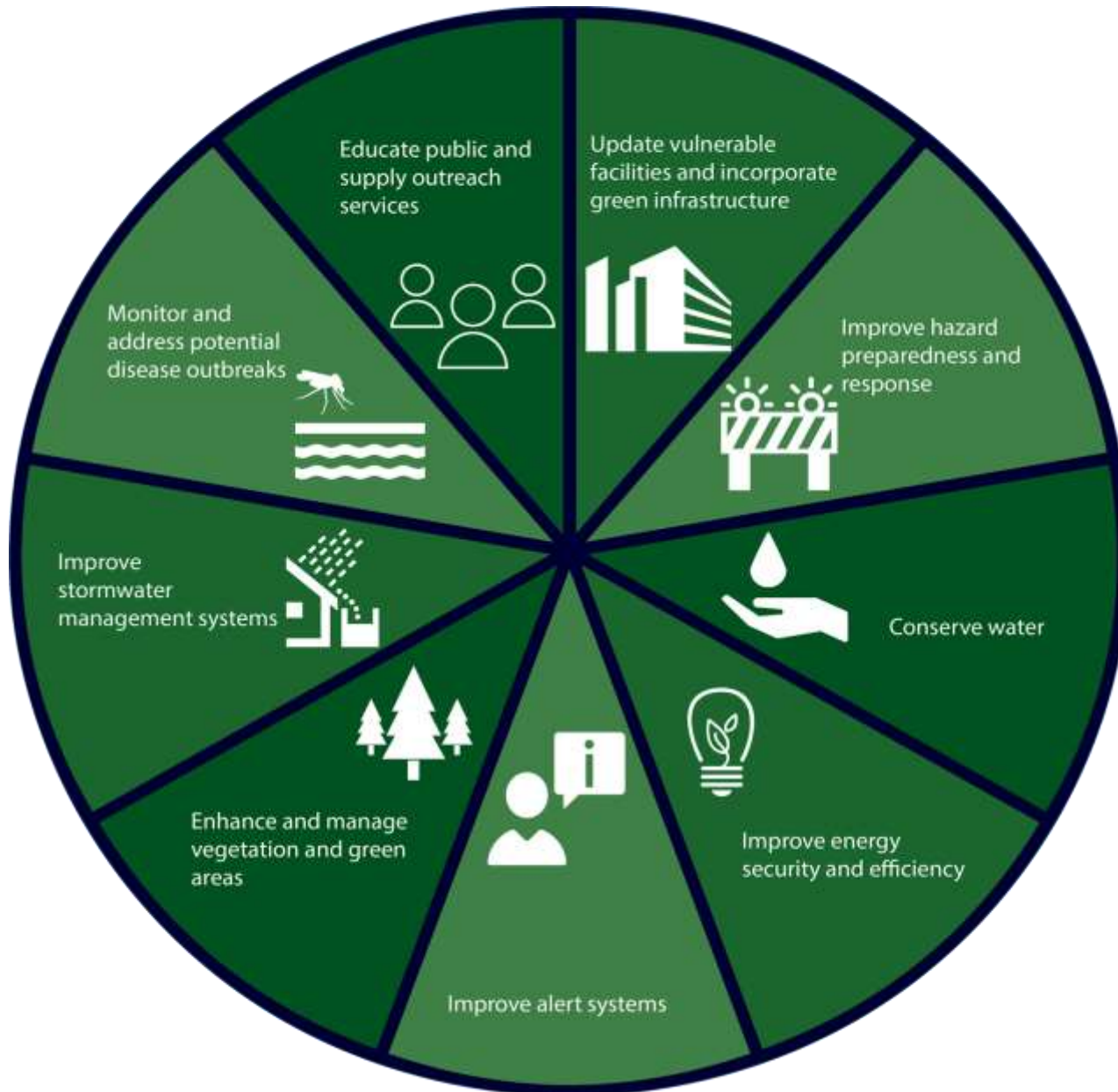
# Climate Change Affect on Hazards

	Hazard	Frequency	Magnitude
High	Flooding	↑	↑
	Winter Weather	↑	↑
	Hurricane/Tropical Storms		↑
Risk	Drought/Extreme Heat	↑	↑
	Thunderstorms/Lightning/Hail		
	Dam/Levee Failure		
	Tornadoes		
Low	Wildfires	↑	↑
	Landslides		

# Climate Change Affect on Hazards

	Hazard	Frequency	Magnitude
High	Flooding	↑	↑
	Winter Weather	↑	↑
	Hurricane/Tropical Storms		↑
Risk	Drought/Extreme Heat	↑	↑
	Thunderstorms/Lightning/Hail		
	Dam/Levee Failure		
	Tornadoes		
Low	Wildfires	↑	↑
	Landslides		

# Potential Adaptation Strategies



# Benefits

- Dedicate time to project (500+ hours)
- Provide foundational information

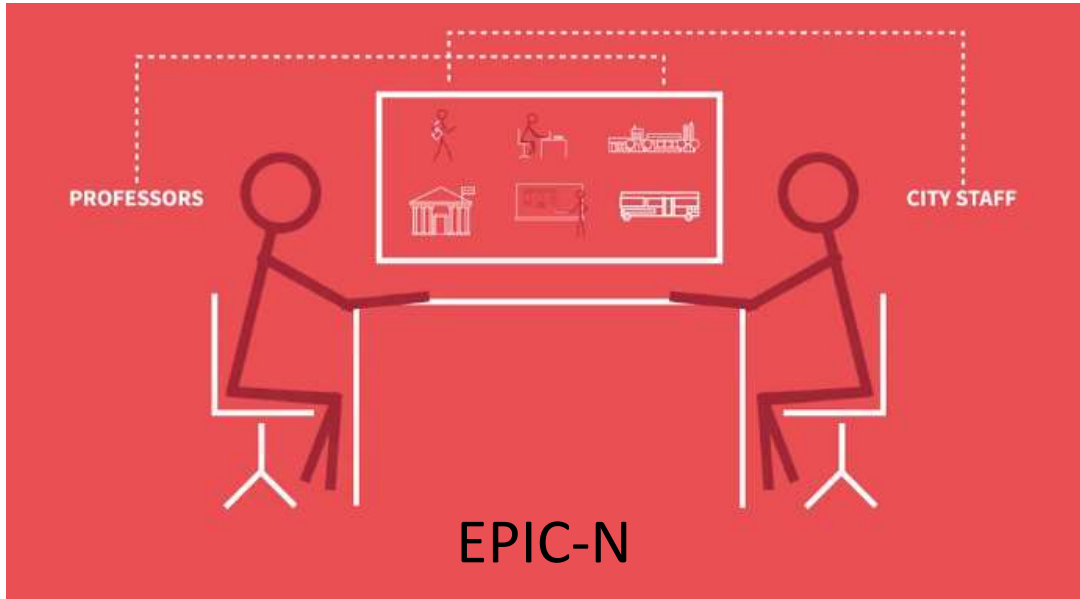
# Benefits

- Dedicate time to project (500+ hours)
- Provide foundational information
- Students have opportunity to conduct meaningful research
- Students learn about hazard mitigation and climate change
- Students engage with local government

# Limitations

- Based on existing publications and resources
- Does not build local government capacity
- Did not engage decision makers and public in process
- Significant effort still needed to assess strategies and move to implementation

# Other University Programs





# Conclusion

- Creative partnerships may help overcome barriers to adaptation
- There are multiple opportunities for local governments to collaborate with universities